

Informed consent

Informed consent was obtained from the individual participant whose case was reported.

Funding

This research did not receive any specific grant from funding agencies in the public, commercial, or not-for-profit sectors.

Conflict of interest

The authors declared no potential conflicts of interest with respect to the research, authorship or publication of this article.

REFERENCES

- Gellrich FF, Günther C. Schnitzler syndrome. *Hautarzt*. 2019, <http://dx.doi.org/10.1007/s00105-019-4434-4>.
- Lipsker D, Veran Y, Grunenberger F, Cribier B, Heid E, Grosshans E. The Schnitzler syndrome: four new cases and review of the literature. *Medicine (Baltimore)*. 2001;80:37-44, <http://dx.doi.org/10.1097/00005792-200101000-00004>.
- Sokumbi O, Drage LA, Peters MS. Clinical and histopathologic review of Schnitzler syndrome: the Mayo Clinic experience (1972-2011). *J Am Acad Dermatol*. 2012;67:1289-95, <http://dx.doi.org/10.1016/j.jaad.2012.04.027>.
- Westhoff TH, Zidek W, Uharek L, Steinhoff-Georgieva J, van der Giet M. Impairment of renal function in Schnitzler's syndrome. *J Nephrol*. 2006;19:660-3.
- Iwafuchi Y, Morita T, Hata K, Nakamura A, Miyazaki S. Schnitzler syndrome complicated by membranous

nephropathy. *Clin Nephrol*. 2012;78:497-500, <http://dx.doi.org/10.5414/CN107135>.

- Basile C, Rossi L, Casucci F, et al. Kidney involvement in the Schnitzler syndrome, a rare disease. *Clin Kidney J*. 2017;10:723-7, <http://dx.doi.org/10.1093/ckj/sfx077>.
- Bridoux F, Leung N, Hutchison CA, et al. Diagnosis of monoclonal gammopathy of renal significance. *Kidney Int*. 2015;87:698-711, <http://dx.doi.org/10.1038/ki.2014.408>.
- Leung N, Bridoux F, Batuman V, et al. The evaluation of monoclonal gammopathy of renal significance: a consensus report of the International Kidney and Monoclonal Gammopathy Research Group. *Nat Rev Nephrol*. 2019;15:45-59, <http://dx.doi.org/10.1038/s41581-018-0077-4>.

Rui Barata^{a,*}, Tiago Assis Pereira^a, Dulce Carvalho^a, Filipa Cardoso^a, Maria Francisca Moraes-Fontes^b, Cândida Fernandes^c, Mário Góis^{a,d}, Helena Viana^{a,d}, Francisco Ribeiro^a, Fernando Nolasco^a

^a Nephrology Department, Hospital Curry Cabral – Centro Hospitalar Universitário de Lisboa Central, Lisbon, Portugal

^b Autoimmune Unit/Medicine 7.2, Hospital Curry Cabral – Centro Hospitalar Universitário de Lisboa Central, Lisbon, Portugal

^c Dermatology Department, Hospital de Santo António dos Capuchos – Centro Hospitalar Universitário de Lisboa Central, Lisbon, Portugal

^d Laboratory of Renal Morphology, Hospital Curry Cabral – Centro Hospitalar Universitário de Lisboa Central, Lisbon, Portugal

* Corresponding author.

E-mail address: rui.f.barata@gmail.com (R. Barata).

<https://doi.org/10.1016/j.nfro.2022.02.008>

0211-6995/© 2022 Sociedad Española de Nefrología. Published by Elsevier España, S.L.U. This is an open access article under the CC BY license (<http://creativecommons.org/licenses/by/4.0/>).

mTOR inhibitors in a patient with lupus nephritis; why not?

Inhibidores de mTOR en una paciente con nefritis lúpica ¿Por qué no?

Dear Editor:

A 31-year-old woman diagnosed with SLE in 2012 with joint (symmetrical arthritis of hands, elbows, knees and feet), skin (photosensitivity and malar rash) and serological (positive ANAs, antiRNP and antiDNA) involvement.

Three years later, she presented a nephrotic syndrome with the presence of microhematuria, and a renal biopsy was performed. Renal histology showed class IV lupus nephropathy with a high activity index. Treatment was started with steroids at a dose of 1 mg/kg and Mycophenolate Mofetil at a dose of 1.5 g/day, allowing partial remission months later, with normal renal function and proteinuria of 1 g/day.

After two and a half years of immunosuppressive treatment, the patient developed condylomas in the genitourinary region, documenting infection by HPV serotype 6 and 51. A cervical biopsy was performed showing the presence of a high-grade cervical intraepithelial neoplasia (CIN), CIN grade 2 (Fig. 1a and b). We initially decided to treat conservatively and to evaluate other therapeutic approaches depending on the evolution of the lesions. The patient was at that time being treated with Mycophenolate Mofetil at a dose of 1 g daily, hydroxychloroquine and rennin-angiotensin-aldosterone system blockade, maintaining normal renal function with proteinuria 0.6 g/day and microhematuria (10 red blood cells per field). As a consequence of the possible relationship of the infection and tumor

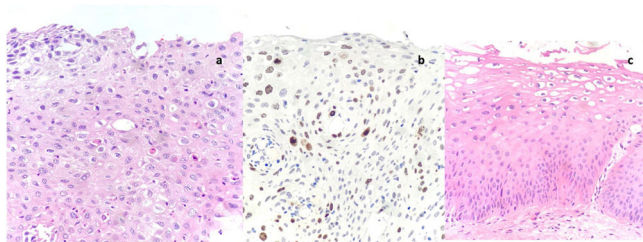


Fig. 1 – Uterine cervix histology.

More pronounced atypia in all layers, less maturation, greater differences in nuclear size (anisonucleosis), coarse chromatin and loss of cell polarity characterizes CIN2. This HSIL shows dyskeratotic cells (small cells with eosinophilic cytoplasm and pyknotic hyperchromatic nuclei) in the middle-third of the epithelium. CIN-2 with marked variability in nuclear size (anisonucleosis) (hematoxylin–eosin, 200×).

MIB-1 immunostaining of the cervix highlights positive cells into the superficial 2/3 of the epithelial thickness.

Ki-67 staining of CIN-2 (MIB-1, 200×).

Lower epithelial cell layers are characterized by preservation of polarity and uniformly distributed chromatin. In the superficial layer, there is conspicuous cell atypia with binucleation, variable nuclear chromasia and perinuclear halos (koilocytosis). CIN-1 with minimal cytological atypia in lower third of the epithelium (hematoxylin–eosin, 200×).

pathology with the degree of immunosuppression of the patient and the stability of her underlying pathology in a young patient, we decided to suspend mycophenolate mofetil and introduce everolimus, prioritizing the resolution of the intraepithelial neoplasia.

Actually, after two years of treatment with everolimus at minimum dose (blood levels between 2 and 5 ng/ml) the patient maintains complete remission of her lupus nephropathy (normal renal function, proteinuria 0.3 g/day and without microhematuria) and achieving the eradication of the condylomas and one of the HPV serotypes in addition to the decrease in grade of the intraepithelial neoplasia (CIN-1 in the last determination) (Fig. 1c). It should be noted that during this period, the patient also presented SARS-CoV-2 infection, without developing pneumonia or respiratory failure, and it was not necessary hospitalization or suspend immunosuppression.

Systemic lupus erythematosus (SLE) is a chronic autoimmune-inflammatory disease with immunocomplex deposition that can affect multiple organs and tissues. Lupus nephritis is one of its most common manifestations, affecting approximately 40% of patients with SLE and representing the most important predictive factor for morbidity and mortality. Immunosuppressive therapy is reserved for cases with aggressive histological presentation in order to control inflammation and renal damage.^{1,2} Patients with lupus nephropathy are exposed to a high immunosuppressive load throughout their lives, which is of greater intensity during induction and of lesser magnitude during maintenance, although for a pro-

longed period, leading to an increase in adverse effects related to it, including the development of opportunistic infections and neoplasms. Although there is great controversy regarding the duration of immunosuppression in this type of patient, according to the various clinical guidelines, it is recommended that immunosuppression be suspended after three years of maintenance, including one year in complete clinical remission. This decision to withdraw is not without risk, given that a new relapse or recurrence of the disease would mean a worsening of both the renal prognosis and the morbidity and mortality related to the disease.³

For this reason, an intermediate option may be useful, consisting of using drugs that allow less intense immunosuppression once the disease has stabilized, conferring at the same time a lower risk of developing neoplasms, or a better response to the infection/neoplasia already established. The mTOR inhibitors may be a promising solution in these cases.

These drugs are potent inhibitors of the proliferation of both B and T lymphocytes and have an established role in the prevention of rejection in renal transplantation, with a lower rate of nephrotoxicity associated and a higher rate of reduction in the incidence of malignant neoplasms with respect to other immunosuppressants.⁴

There is little information about use of mTORi as immunosuppressive treatment in patients with lupus nephropathy. In the literature, most of them have been reported in experimental murine models and not in humans, suggesting that these drugs could be applied at least as maintenance treatment in lupus nephritis.⁵ Lui et al. have showed that the effect of sirolimus applied in murine models before the onset of proteinuria (with delayed development of nephritis) and after the onset of nephritis was proven, with a decrease in the deposit of immunocomplexes in the kidney, improving both the clinical manifestations of the disease and its survival.^{6,7} Pilot experiments in patients with class III/IV lupus nephritis showed an acceptable tolerability profile in long-term treatment and results that suggest therapeutic efficacy.⁸

In conclusion, the harmful effects of immunosuppression in lupus nephropathy may condition our therapeutic strategy. The use of mTORi may be an alternative in selected patients, allowing a double beneficial effect: control of the underlying pathology and improvement of adverse events.

Conflict of interest

The authors declare that they have no conflicts of interest.

REFERENCES

- Mallat SG, Tanios BY, Itani HS, Lotfi T, McMullan C, Gabardi S, et al. CMV and BKPyV infections in renal transplant recipients receiving an mTOR inhibitor-based regimen versus a CNI-based regimen: a systematic review and meta-analysis of randomized. *Controlled Trials. Clin J Am Soc Nephrol.* 2017;12:1321–36.
- Murugan AK. mTOR: role in cancer, metastasis and drug resistance. *Semin Cancer Biol.* 2019;59:92–111.
- Morales E, Galindo M, Trujillo H, Praga M. Update on lupus nephritis: looking for a new vision. *Nephron.* 2021;145:1–13.

4. Fantus D, Rogers N, Grahammer F, Huber TB, Thomson AWAT. Roles of mTOR complexes in the kidney: implications for renal disease and transplantation. *Nat Rev Nephrol.* 2016;12:587-609.
5. Ma MKM, Yung S, Mao Chan T. mTOR inhibition and kidney diseases. *Transplantation.* 2018;102:S32-40.
6. Lui SL, Tsang R, Chan KW, Zhang F, Tam S, Yung S, et al. Rapamycin attenuates the severity of established nephritis in lupus-prone NZB/W F1 mice. *Nephrol Dial Transplant.* 2008;23:2768-76.
7. Stylianou K, Petrakis I, Mavroeidi V, Stratakis S, Vardaki E, Perakis K, et al. The PI3K/Akt/mTOR pathway is activated in murine lupus nephritis and downregulated by rapamycin. *Nephrol Dial Transplant.* 2011;26:498-508.
8. Yap DY, Ma MK, Tang CS, Chan T. Proliferation signal inhibitors in the treatment of lupus nephritis: preliminary experience. *Nephrology (Carlton).* 2012;17:676-80.

Raquel Berzal^{a,*}, Beatriz Agredano^b, Marco Gil^b,
María Galindo^{c,d,e}, Enrique Morales^{a,d,e}

^a Department of Nephrology, Hospital Universitario 12 de Octubre, Madrid, Spain

^b Department of Pathology, Hospital Universitario 12 de Octubre, Madrid, Spain

^c Department of Rheumatology, Hospital Universitario 12 de Octubre, Madrid, Spain

^d Investigation Institute i+12, Hospital Universitario 12 de Octubre, Madrid, Spain

^e Department of Medicine, Universidad Complutense de Madrid, Madrid, Spain

* Corresponding author.

E-mail address: berzalraquel@gmail.com

(R. Berzal).

<https://doi.org/10.1016/j.nefro.2022.03.005>

0211-6995/© 2022 Sociedad Española de Nefrología. Published by Elsevier España, S.L.U. This is an open access article under the CC BY-NC-ND license (<http://creativecommons.org/licenses/by-nc-nd/4.0/>).

Multicentric Castleman's disease in kidney transplant: A case report and literature review

Enfermedad de castleman multicéntrica en el trasplante renal: reporte de un caso y revisión de la literatura

Dear Editor,

A 58-year-old man with end-stage renal disease (ESRD) secondary to an IgA nephropathy received his first deceased-donor kidney transplant in 2005 and a second one in 2009. Induction immunosuppression consisted of thymoglobulin, mycophenolate, tacrolimus, and corticosteroid. Maintenance immunosuppression consisted of tacrolimus, mycophenolate, and prednisone, with a late switch from mycophenolate to everolimus due to viral infections.

In September 2018, he attended the Emergency Department presenting fever and hypotension, physical examination was normal with no evidence of lymphadenopathy. The serum creatinine was 1.9 mg/dl (baseline 1.4 mg/dl). The hemogram revealed a high white blood cell count of $10.7 \times 10^3/\mu\text{l}$, with $1.97 \times 10^3/\mu\text{l}$ lymphocytes, and hemoglobin of 13.9 g/dl.

Due to the suspicion of urinary sepsis, cultures (urine and blood) were taken, and he was treated with antibiotics. Despite the use of an appropriate antibiotic, the patient persisted with fever, therefore we decided to request a FDG-PET/CT and polymerase chain reaction (PCR) for various viruses. PCR for CMV, BK, HSV-1, HSV-2, and HV-6 were negatives, while PCR for herpes virus-8 (HV-8) was positive. The result of FDG-PET/CT was the presence of multiple hypermetabolic lymph nodes at both sides of the diaphragm. With the suspicion of a lymphoproliferative syndrome, we reduced immunosuppressive

therapy to prednisone and 2 monthly doses of intravenous (IV) immunoglobulins. The histological examination of a lymph node (Figs. 1 and 2) revealed the presence of multicentric Castleman disease (CD) with positivity for HV-8 and after that, the patient was evaluated by the Hematology team. They decided to treat according to the following regimen: valganci-

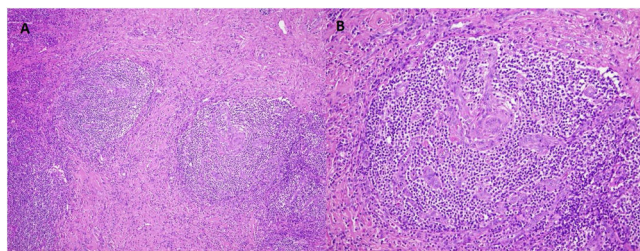


Fig. 1 – (A) Multicentric Castleman's disease. Follicles with lymphocytes arranged in concentric layers ("onion-skinning"). H/E 10 \times . (B) Atretic follicular centers with sclerotic blood vessels that radially penetrate the germinal centers, forming hyaline vascular lesions ("lollipop lesions"). H/E 20 \times .