

Tabla 2. Datos analíticos

Semanas de gestación	4	8	12	16	20	24	28	32
Hemoglobina (g/dl)	9,2	9,7	9,8	9,4	8,4	9,8	10,3	9,4
Hematocrito (%)	27	29,1	30,9	27,0	24,4	29,0	30,1	27,8
Calcio (mg/dl)	8,2	9,2	9,7	10,1	9,4	9,1	9,9	9,6
Bicarbonato (mmol/l)	21,8		24,2			25,4		25,0
Urea prediálisis (mg/dl)	104	109	92	68	63	101	64	96

Por tanto, aunque la información de que disponemos para el manejo de dichas pacientes es aún escasa, los últimos resultados publicados deben llevarnos a ser optimistas en el tratamiento de estas situaciones.

Conflictos de interés

Los autores declaran que no tienen conflictos de interés potenciales relacionados con los contenidos de este artículo.

- Gómez-Vázquez JA, Martínez Calva IE, Mendiola-Fernández R, Escalera-León V, Cardona M, Noyola H. Pregnancy in end stage renal disease patients and treatment with peritoneal dialysis: report of two cases. *Perit Dial Int* 2007;27:353-8.
- Swaroop R, Zabaneh R, Parimoo N. Pregnancy in end-stage disease patients on hemodialysis: two case reports. *Cases Journal* 2009;2:8139.
- Piccoli G, Conijn A, Consiglio V, Vasario E, Attini R, Deagostini M, et al. Pregnancy in dialysis patients: is the evidence strong enough to lead us to change our counseling policy? *Clin J Am Soc Nephrol* 2010;5:62-71.
- Bagon JA, Vernaev H, De Muylder X, Lafontaine JJ, Martens J, Van Roost G. Pregnancy and dialysis. *Am J Kidney Dis* 1998;31:756-65.
- Okundaye I, Abrinko P, Hou S. Registry of pregnancy in dialysis patients. *Am J Kidney Dis* 1998;31:766-73.
- Furaz Czerpak KR, Puente García A, Corchete Prats E, Moreno MA, Martín Hernández R. Gestación con éxito en

una paciente con insuficiencia renal crónica en programa de hemodiálisis. *Nefrología* 2011;31(2):219-21.

- Levy D, Giatras I, Junger P. Pregnancy and end-stage renal disease-past experience and new insights. *Nephrol Dial Transplant* 1998;13:3005-7.
- Jungers P, Chauveau D. Pregnancy in renal disease. *Kidney Int* 1997;52:871-85.

María Ruiz-Campuzano¹, Silvia Soto-Alarcón², Antonio Martínez-Ruiz², Eladio Lucas-Guillén²

¹ Servicio de Medicina Interna. Hospital Rafael Méndez. Lorca, Murcia.

² Sección de Nefrología. Hospital Rafael Méndez. Lorca, Murcia.

Correspondencia: María Ruiz Campuzano
Servicio de Medicina Interna.
Hospital Rafael Méndez. Lorca, Murcia.
mariaaruc@hotmail.com

C1q Nephropathy and Malignancy

Nefrología 2012;32(2):270-2

doi:10.3265/Nefrologia.pre2011.Dec.11246

Dear Editor,

C1q nephropathy (C1qN) is an idiopathic glomerular disease characterized by extensive mesangial deposition of C1q with associated mesangial immune complexes, in the absence of evidence of systemic lupus erythematosus¹.

The prevalence of C1qN has been estimated from 0.2% to 16%¹⁻⁹. Light microscopy (LM) findings range from no glomerular abnormalities to mesangial proliferation^{1,6-9,11,12} or focal segmental glomerulosclerosis (FSG)^{2-4,6-8,13}. Clinical presentations vary from asymptomatic urinary anomalies^{5,7,8,11,13}, and macroscopic hematuria¹⁴, to nephritic syndrome^{3,15} and corticosteroid-resistant nephrotic syndrome (NS)^{1,2-4,6-8}. Earlier reports found a poor response to steroids and a high risk of progression to end-stage renal disease (ESRD)^{1,3,6,12,15}, particularly those with FSG. Patients presenting asymptomatic urinary anomalies have been found to have a good prognosis^{2-5,7,8}. The variability in the prevalence, clinical presentation and prognosis of C1qN has been attributed to different ages and ethnicities of the patients included in the series, and to different thresholds to perform a renal biopsy.

The association between NS and malignancy has been reported in various glomerulopathies, but not with C1qN. Recognition of malignancy-associated glomerulopathies is important to prevent ineffective and potentially harmful treatment.

A 56-year-old male was admitted to our Department with NS. He reported persistent peripheral edema lasting for two months. He was a smoker of 80 packs/year. He had exuberant edema of lower extremities and abdominal wall. Laboratory findings revealed hypoalbuminemia (1.1g/dL), proteinuria (10g/day) and microscopic hematuria; serum creatinine was 1.1mg/dL and urea: 48mg/dL. Hyperlipidemia (total-cholesterol: 326mg/dL) was also noted. HBs-antigen, HCV-antibody and HIV-antibody were all negative. Serum protein electrophoresis was unremarkable; complement levels, ANCA, ANA, cryoglobulins and anti-phospholipid antibodies were normal. Ultrasonography of the kidneys was unremarkable. Abdominal ultrasonography showed small volume ascites, and chest X-ray revealed small pleural effusions, without any other abnormal findings.

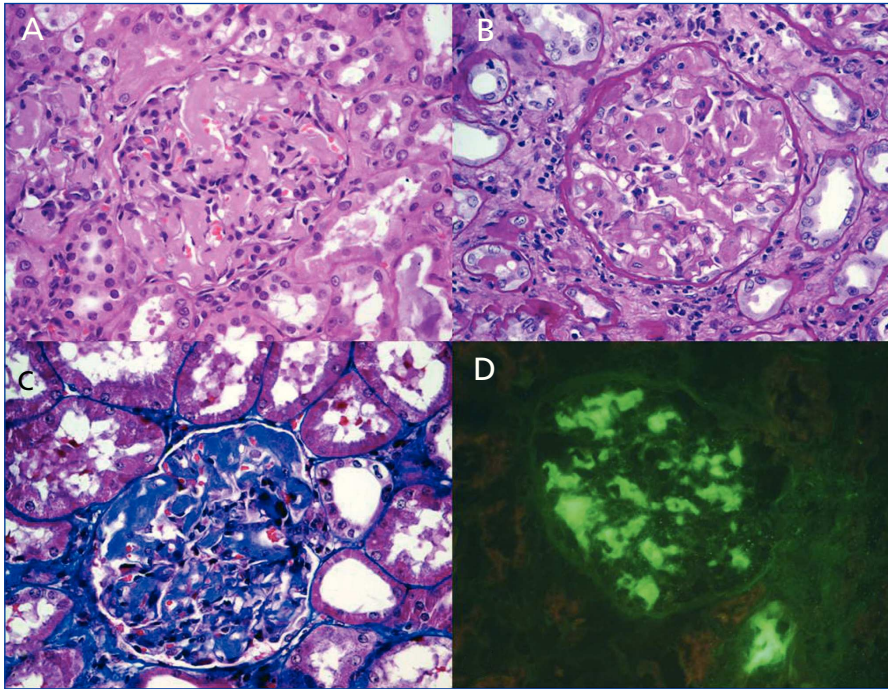


Figure 1. Kidney biopsy specimen.

H&E (A), PAS (B) and Masson trichrome (C) magnification x 400, show segmental thickening of glomerular basement membranes and mesangium by an eosinophilic amorphous material, without mesangial hypercellularity. Immunofluorescence study (x 400) revealed predominant mesangial deposits of C1q (D).

A renal biopsy was performed, whose histological findings are shown in Figure 1. Fifteen glomeruli were observed, showing segmental thickening of glomerular basement membranes (GBM) and mesangium by an eosinophilic Congo-red negative amorphous material. Spike formation or stippling of the GBM was absent in periodic-acid methenamine-silver staining. Immunofluorescence (IF) revealed predominant presence of comma-shaped C1q mesangial deposits.

We started prednisolone (1mg/Kg/day), cyclosporine (3mg/Kg/day) and acenocumarol. One month later, he had an acute pyelonephritis, with worsening renal function (creatinine: 1.6mg/dL). Prednisolone dose was reduced to 0.5mg/Kg/day.

Two months later, his clinical condition deteriorated, with asthenia, anorexia and anasarca. Laboratory findings revealed a serum creatinine of 3.9 mg/d, with proteinuria (39g/day) and hypoalbuminemia (1.1g/dL); trough

levels of cyclosporine were 176ng/mL. In an attempt to reduce proteinuria, non-steroidal anti-inflammatory drugs were tried, without response. Cyclosporine was stopped and a right nephrectomy was performed. FSG was noted in all of the 15 glomeruli, with persistence of mesangial C1q deposits. It is plausible that the first biopsy was

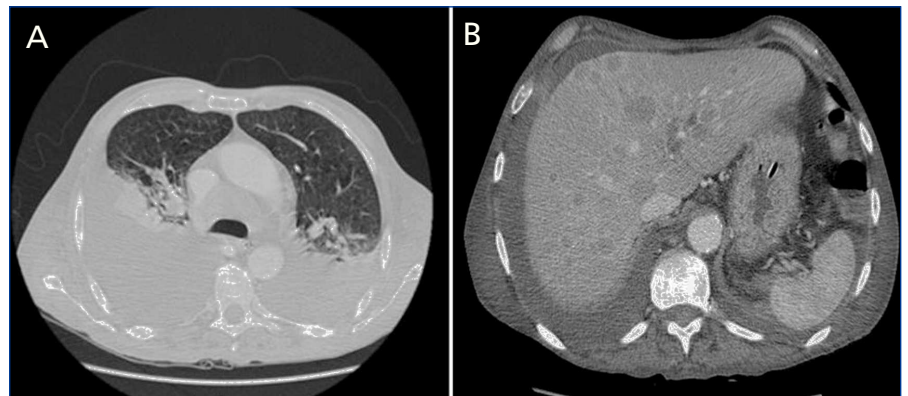


Figure 2. CT scan.

CT scan shows bilateral pleural effusion, with atelectasis of the lower right and lower left lung lobes, associated with lymphatic mediastinal metastases (A), and multiple diffuse hepatic nodules (B).

not representative, or maybe this findings represented the rapid course of the disease.

In the post-operative period, the patient developed signs of hyperhydration and started haemodialysis. Hypoalbuminemia and signs of hyperhydration gradually improved, but he maintained severe proteinuria. When clinical euvolemia was achieved, a right pleural effusion persisted. A CT scan was performed, revealing a disseminated neoplasm (Figure 2). A pleural exudate without malignant cells was drained. Tumor markers Ca 19.9 (95.2U/L, normal <27U/L) and neuron specific enolase (NSE) (96.6U/L, normal <15.2U/L) were elevated.

The patient's general condition rapidly deteriorated with marked cachexy and, later on, respiratory failure. Invasive investigation was not possible, as the patient was not fit. A week later, he died with a nosocomial respiratory infection. Histological characterization of the neoplasm was not possible, as the patient's family refused an autopsy.

C1qN can present with NS, typically with histological phenotype of either MCD or FSG. In a report of 15 pediatric patients with C1qN, 9 children had corticosteroid-resistant NS. FSG was diagnosed in four cases with poor outcome³. Markowitz et al.² reported 19 patients with C1qN, 79% of which

with nephrotic proteinuria. Renal biopsy disclosed FSG in 17 patients and MCD in two. Four patients with FSG had progressive renal insufficiency and two developed ESRD within 27 months. In a report of 20 pediatric patients, 70% presented nephrotic range proteinuria⁴. The most common histological phenotypes were FSG (40%) and MCD (30%). Patients with FSG had poor prognosis, with half progressing to ESRD in 3 years. In the report of Vizjak et al.⁷ comprising 72 kidney biopsies with C1qN, FSG was found in 11 patients with NS, 33% which progressed to ESRD within 2.9 years. Hisano et al.⁸ reported a lower prevalence of NS (41%) among 61 Japanese patients with C1qN. The prevalence of MCD in the nephrotic group was 92%, while FSG corresponded only to 8% of the cases. The majority of the patients in nephrotic group were frequent relapsers, but only 4% progressed to ESRD.

A paraneoplastic syndrome is usually inferred when glomerular proteinuria develops in the six months before or after the diagnosis of malignancy. In our patient, initial evaluation didn't provide any clue to an underlying diagnosis of malignancy. His systemic manifestations were attributed to severe protein loss, as well as to prolonged periods of hospitalization. Five months after the diagnosis of NS, a right pleural effusion persisted after achievement of euvoemia, and a CT was performed showing a disseminated neoplasm. The patient's clinical condition had markedly deteriorated and he died of sepsis and respiratory failure within a week.

Previous immunosuppressive therapy may have triggered tumor cells, and promote the rapid and inexorable outcome. The patient was a heavy smoker, a known risk factor for several types of neoplasm, including lung and gastrointestinal tract carcinomas, the

most frequently associated with paraneoplastic glomerulopathies. He also had high levels of NSE and Ca 19.9, which can be found in gastrointestinal and lung cancers.

Failure to recognize paraneoplastic glomerulonephritis can subject patients to ineffective and potentially harmful therapy. It is important to highlight the possible association between C1qN and malignancy. Before refractory NS associated with C1qN, an underlying malignancy should be suspected.

Conflict of interest

The authors declare that there is no conflict of interest associated with this manuscript.

- Jennette JC, Hippi CG. C1q nephropathy: a distinct clinical pathologic entity usually causing nephrotic syndrome. *Am J Kidney Dis* 1985;6(2):103-10.
- Markowitz G, Schwimmer J, Stokes M, Nasr S, Seigle RL, Valeri AM, et al. C1q nephropathy: A variant of focal segmental glomerulosclerosis. *Kidney Int* 2003;64:1232-40.
- Iskandar SS, Browning MC, Lorentz WB. C1q nephropathy: a pediatric clinicopathologic study. *Am J Kidney Dis* 1991;18(4):459-65.
- Lau K, Gaber L, Santos N, Wyatt R. C1q nephropathy: features at presentation and outcome. *Pediatr Nephrol* 2005;20:744-9.
- Nishida M, Kawakatsu H, Okumura Y, Hamaoka K. C1q nephropathy with asymptomatic urine abnormalities. *Pediatr Nephrol* 2005;20(1):1669-70.
- Kersnik LT, Kenda RB, Avgustin CM, Ferluga D, Hvala A, Vizjak A. C1Q nephropathy in children. *Pediatr Nephrol* 2005;20(12):1756-61.
- Vizjak A, Ferluga D, Jennette, Hvala A, Lindic J, Levart TK, et al. Pathology, clinical presentations, and outcomes of C1q nephropathy. *J Am Soc Nephrol* 2008;19:2237-44.
- Hisano S, Fukuma Y, Segawa Y, Niimi K, Kaku Y, Hatae K, et al. Clinicopathologic

correlation and outcome of C1q nephropathy. *Clin J Am Soc Nephrol* 2008;3:1637-43.

- Roberti I, Baqi N, Vyas S. A single-center study of C1q nephropathy in children. *Pediatr Nephrol* 2009;24:77-82.
- Wong CS, Fink CA, Baechle J, Harris AA, Staples AO, Brandt JR. C1q nephropathy and minimal change nephrotic syndrome. *Pediatr Nephrol* 2009;24:761-7.
- Davenport A, Maciver AG, Mackenzie JC. C1q nephropathy: do C1q deposits have any prognostic significance in the nephrotic syndrome? *Nephrol Dial Transplant* 1992;7(5):391-6.
- Sharman A, Furness P, Feehally J. Distinguishing C1q nephropathy from lupus nephritis. *Nephrol Dial Transplant* 2004;19:1420-6.
- Fukuma Y, Hisano S, Segawa Y, Niimi K, Tsuru N, Kaku Y, et al. Clinicopathologic correlation of C1q nephropathy in children. *Am J Kidney Dis* 2006;47(3):412-8.
- Taggart L, Harris A, El-Dahr Samir. C1q nephropathy in a child presenting with recurrent gross hematuria. *Pediatr Nephrol* 2010;25:165-8.
- Srivastava T, Chadha V, Taboada EM, Alon US. C1q nephropathy presenting as rapidly progressive crescentic glomerulonephritis. *Pediatr Nephrol* 2000;14(10-11):976-9.

**Sofia Rocha¹, M. João Carvalho¹,
Luísa Lobato¹, Josefina Santos¹,
Guilherme Rocha¹, Ramón Vizcaíno²,
António Cabrita¹**

¹ Department of Nephrology. Hospital de Santo António, Centro Hospitalar do Porto. Porto (Portugal).

² Department of Pathology. Hospital de Santo António, Centro Hospitalar do Porto. Porto (Portugal).

Correspondence: Sofia Rocha

Department of Nephrology, Hospital de Santo António, Centro Hospitalar do Porto. Largo Professor Abel Salazar, 4099-001, Porto, Portugal.

sofiarocha81@gmail.com
asgr_sigel@hotmail.com