

# Acute renal failure predictors in elderly patients with chronic kidney disease

Manuel Heras<sup>1</sup>, M. José Fernández-Reyes<sup>1</sup>, M. Teresa Guerrero<sup>2</sup>, Rosa Sánchez<sup>1</sup>, Angélica Muñoz<sup>2</sup>, Álvaro Molina<sup>1</sup>, M. Astrid Rodríguez<sup>1</sup>

<sup>1</sup> Servicio de Nefrología. Hospital General de Segovia (Spain)

<sup>2</sup> Servicio de Geriátrica. Hospital General de Segovia (Spain)

Nefrologia 2012;32(6):819-23

doi:10.3265/Nefrologia.pre2012.Sep.11631

## ABSTRACT

**Introduction:** Acute renal failure (ARF) is a very common problem in the elderly and is associated with high morbidity and mortality rates. This study analysed ARF predictors in a cohort of elderly subjects and their impact on the evolution of renal function. **Patients and method:** A group of 80 elderly individuals were recruited between January and April 2006, and 56 of these who were still alive after 36 months were retrospectively studied, examining episodes of ARF, their causes, and the need for dialysis. **Results:** Twelve patients (21.4%) developed ARF: 4 (33.3%) related to heart failure, 4 (33.3%) due to infection/sepsis, 2 (16.7%) due to volume depletion, and another 2 were multifactorial (16.7%). No patients required dialysis therapy. Patients with ARF were older ( $P=.017$ ), had worse renal function at baseline ( $P=.031$ ), higher levels of uric acid ( $P=.002$ ), and lower haematocrit ( $P=.003$ ). Patients with ARF had a mean baseline serum creatinine of  $1.57\pm 0.59$ mg/dl and peak creatinine levels during episodes of ARF averaged  $4.25\pm 4.26$ mg/dl ( $P=.035$ ). Mean renal function at 36 months in patients with ARF had decreased ( $P=.024$ ). In a logistic regression analysis (independent variables: baseline MDRD, age, gender, Charlson index, serum creatinine, urea, and uric acid), age (RR: 1.20, 1.01-1.43,  $P=.039$ ), uric acid (RR: 2.65, 1.11-6.30,  $P=.027$ ), and haematocrit (RR: 0.64, 0.43-0.96,  $P=.031$ ) were independently associated with the development of ARF. **Conclusions:** Baseline levels of uric acid and haematocrit are independent risk factors for the development of ARF in the elderly. Although these episodes may be functional in nature and not require dialysis, this can still cause a deterioration of renal function over time.

**Keywords:** Acute kidney failure. Elderly. Chronic renal disease. Uric acid. Hematocrit.

## Factores predictores de fracaso renal agudo en ancianos con enfermedad renal crónica

### RESUMEN

**Introducción y objetivos:** El fracaso renal agudo (FRA) es un problema muy común en los ancianos y conlleva una elevada morbimortalidad. En este estudio se analizan los factores predictores de FRA en una cohorte de ancianos y su impacto en la evolución de la función renal. **Pacientes y métodos:** Sobre un grupo de 80 ancianos reclutados entre enero-abril de 2006, se estudian de forma retrospectiva, en 56 pacientes que continúan con vida a los 36 meses, los episodios de FRA, sus causas y la necesidad de diálisis. **Resultados:** 12 pacientes (21,4 %) presentaron FRA: 4 (33,3 %) con relación a insuficiencia cardíaca, 4 (33,3 %) por infección/sepsis, 2 (16,7 %) por depleción de volumen y otros 2 multifactorial (16,7 %). Ningún paciente precisó terapia con diálisis. Los pacientes con FRA eran más añosos ( $p = 0,017$ ), tenían basalmente peor función renal ( $p = 0,031$ ), mayores niveles de ácido úrico ( $p = 0,002$ ) y menores de hematocrito ( $p = 0,003$ ). Los pacientes con FRA tenían una creatinina sérica basal de  $1,57 \pm 0,59$  mg/dl y el pico máximo de creatinina durante el FRA fue de  $4,25 \pm 4,26$  mg/dl ( $p = 0,035$ ). La función renal a los 36 meses en pacientes con FRA había disminuido ( $p = 0,024$ ). En el análisis de regresión logística (variables independientes: edad, género, índice de Charlson, creatinina sérica, urea, ácido úrico, MDRD basales), la edad (riesgo relativo [RR]: 1,20; 1,01-1,43;  $p = 0,039$ ), el ácido úrico (RR: 2,65; 1,11-6,30;  $p = 0,027$ ) y el hematocrito (RR: 0,64; 0,43-0,96;  $p = 0,031$ ) se asociaban independientemente con el desarrollo posterior de un FRA. **Conclusión:** el nivel basal de ácido úrico y de hematocrito son factores de riesgo independiente para el desarrollo de FRA en ancianos, que, aun siendo de carácter funcional y sin necesidad de diálisis, producen un deterioro de la función renal en el tiempo.

**Palabras clave:** Fracaso renal agudo. Ancianos. Enfermedad renal crónica. Ácido úrico. Hematocrito.

**Correspondence:** Manuel Heras Benito

Servicio de Nefrología.

Hospital General de Segovia. Segovia. (Spain).

mherasb@saludcastillayleon.es

## INTRODUCTION AND OBJECTIVES

Structural and functional changes associated with aging kidneys, together with the presence of certain comorbidities

typical of the elderly, make this population particularly vulnerable to developing acute renal failure (ARF).<sup>1</sup>

The aetiology of this condition generally involves multiple causes, such as volume depletion, processes that alter renal haemodynamics, exposure to nephrotoxic compounds, and even iatrogenic events.<sup>2</sup>

As regards prognosis, this syndrome is associated with increased morbidity and mortality rates.<sup>1,3</sup> It has been shown that ARF is a risk factor for the development of chronic kidney disease (CKD) and the need for dialysis in the elderly.<sup>4</sup> In a meta-analysis, Ishani et al. demonstrated that the risk of terminal nephropathy was 13 times greater in elderly individuals hospitalised with ARF than in those without ARF, suggesting that episodes of ARF could accelerate the progression of kidney disease.<sup>5</sup>

The identification of risk factors for ARF in these patients may aid in establishing strategies for avoiding the appearance of this condition, thus reducing the morbidity and mortality produced by this syndrome.

The objectives of our study were to: a) evaluate which factors serve as predictors for the development of ARF in elderly individuals, and b) evaluate the impact that ARF has on the evolution of renal function.

## PATIENTS AND METHOD

### Patients

Of the 80 patients in the study of elderly patients with CKD at the Hospital General de Segovia (randomly recruited in external consultations in geriatrics and general nephrology between January and April 2006, during a period of clinical stability),<sup>6,7</sup> we examined 56 patients who were still alive 36 months after recruitment and who had developed at least one episode of ARF during the period in which they were hospitalised.

### Method

Ours was a retrospective, observational study. We defined ARF as an increase in serum creatinine  $>0.5$ mg from the previous measurement. We registered the peak serum creatinine value measured during the ARF episode. We also examined the causes of ARF, as well as the need for renal replacement therapy. Glomerular filtration rate (GFR) was estimated using the abbreviated MDRD (Modification of Diet in Renal Disease) formula.<sup>8</sup>

We registered baseline comorbidity using the Charlson index, without including age as a factor.<sup>9</sup>

### Statistical analysis

We performed all statistical analyses using SPSS statistical software, version 15.0. All data were expressed as percentages, means, and standard deviations. We compared means using Student's t-tests if the data distribution was normal, and Mann-Whitney U-tests for non-parametric data. We compared proportions using Fisher's chi-square test. With the objective of evaluating the impact of ARF on parameters of renal function over time, we used a linear model for repeated measures. In order to analyse the variables that serve as predictors for ARF, we performed a logistic regression analysis. The statistical significance level was set at 95% ( $P < .05$ ).

## RESULTS

Of the 56 patients who completed the 36 month follow-up period, 12 (21.4%) developed at least one episode of ARF during hospitalisation. Table 1 summarises baseline comorbidity values, socio-demographic characteristics, renal function parameters, and haematocrit, and compares values between patients with and without ARF. Patients who developed ARF were significantly older, had worse baseline renal function, higher uric acid levels, and lower haematocrit. There were no significant differences in terms of comorbidity, history of ischaemic heart disease, heart failure, or use of diuretics during the baseline period when comparing between the two groups.

As regards the causes of ARF, four patients (33.3%) developed ARF in association with heart failure; 4 cases (33.3%) presented deterioration of renal function due to an infectious process/sepsis; 2 (16.7%) were caused by volume depletion associated with drug use (levofloxacin/opiates), and another 2 cases (16.7%) were caused by multiple factors. No patients required renal replacement therapy with dialysis. Three patients died during the episode of ARF (two of multiple origin and another related to sepsis).

Patients with ARF had a mean baseline serum creatinine value of  $1.57 \pm 0.59$ mg/dl, and a maximum peak serum creatinine reached during the episode of ARF of  $4.25 \pm 4.26$ mg/dl ( $P = .035$ ).

We observed no significant differences in terms of level of control of blood pressure (BP) values after 36 months in our study patients (mean systolic BP:  $130.02 \pm 16$ mm Hg without ARF vs.  $136.16 \pm 12$ mm Hg with ARF; mean diastolic BP:  $71.75 \pm 10$ mm Hg without ARF vs  $67.83 \pm 7$ mm Hg with ARF).

Table 2 summarises the impact of the episode of ARF on renal function parameters during the follow-up period. Figure 1 displays how patients with ARF suffered a greater

**Table 1.** Comparison of the sociodemographic characteristics, parameters of renal function, haematocrit, and comorbidity during the baseline period between elderly patients with and without at least one episode of acute renal failure during a 36-month monitoring

	No ARF (n=44)	ARF (n=12)	P
Age (years)	80.43±6.74	84.75±4.65	0.017
Sex (male/female)	10/34	6/6	ns
Baseline Crs (mg/dl)	1.13±0.36	1.57±0.59	0.012
Baseline urea (mg/dl)	49.32±14	75.75±45	ns
Baseline uric acid (mg/dl)	5.50±1.42	7.15±1.95	0.002
Baseline MDRD (ml/min)	56.53±14	45.29±19	0.031
Proteinuria (g/24h)	0.05±0.18	0.35±0.64	ns
Baseline haematocrit (%)	42.81±4.10	38.45±5.29	0.003
Hypertension (%)	37 (84.1%)	10 (83.3%)	ns
Diabetes mellitus (%)	15 (34.1%)	5 (41.7%)	ns
Charlson index	1.56±1	1.50±0.9	ns

Crs: serum creatinine; ARF: acute renal failure; MDRD: Modification of Diet in Renal Disease formula; ns: not significant.

deterioration in MDRD-estimated glomerular filtration rate during the 36-month study period.

In the logistic regression analysis to evaluate which factors were the best predictors for the appearance of ARF in this study population (independent variables: baseline MDRD, age, gender, Charlson index, serum creatinine, urea, and uric acid), age (relative risk [RR]: 1.20; 1.01-1.43;  $P=0.039$ ), uric acid (RR: 2.65; 1.11-6.30;  $P=0.027$ ), and haematocrit (RR:

0.64; 0.43-0.90;  $P=0.031$ ) were independently associated with the development of ARF.

## DISCUSSION

Approximately one-fourth of all individuals in the study of elderly patients with CKD that were still alive 36 months after being recruited to the study had developed at least one

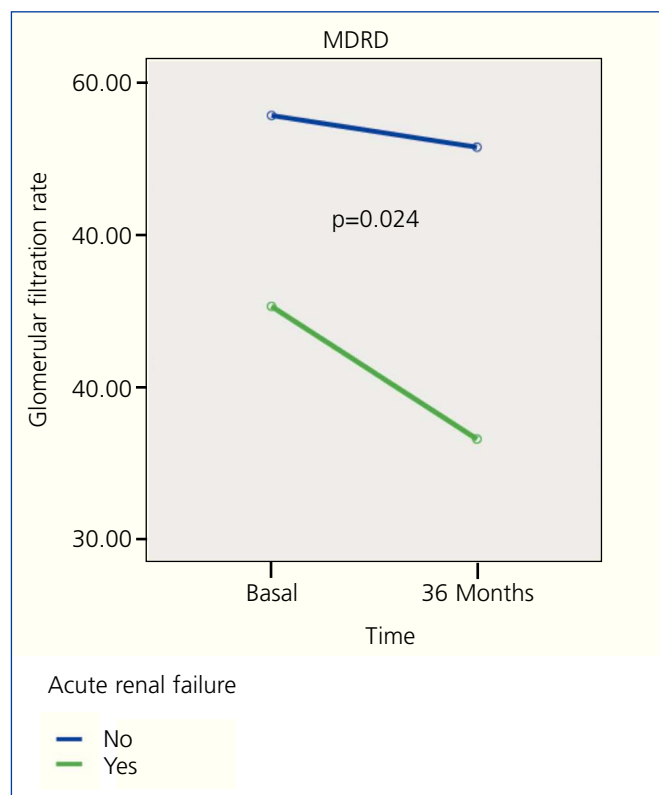
**Table 2.** Impact of acute renal failure on the evolution of renal parameters after 36 months

	No ARF (n=44)	ARF (n=12)	P(1)	P(2)
Baseline Crs	1.14±0.37	1.57±0.59	0.000	0.000
Crs at 36 months (mg/dl)	1.16±0.33	1.98±0.86		
Baseline urea	49.00±16	79.54±45	0.001	ns
Urea at 36 months (mg/dl)	54.62±22	96.18±30		
Baseline eGFR (MDRD)	56.37±14	45.29±19	0.002	0.024
eGFR (MDRD) at 36 months (ml/min/1.73m <sup>2</sup> )	54.89±15	36.56±17		
Baseline proteinuria	0.075±0.21	0.38±0.60	0.048	ns
Proteinuria at 36 months (g/24 h)	0.10±0.25	0.76±1.00		

Crs: serum creatinine; eGFR: estimated glomerular filtration rate; MDRD: Modification of Diet in Renal Disease formula; ns: not significant.

p (1): changes in the follow-up period.

p (2): differences between groups in the changes occurred.



**Figure 1.** Evolution of MDRD-estimated glomerular filtration rate following an episode of acute renal failure. MDRD: Modification of Diet in Renal Disease.

episode of ARF during hospitalisation. In these cases, the primary aetiology was for the most part functional (in the context of heart failure, infectious processes, and in two cases, volume depletion associated with drug administration); in addition, these patients were treated without the need for dialysis. These results are comparable to those from previous studies.<sup>1,2</sup>

The availability of biological markers for the early detection and treatment of ARF could aid in reducing the morbidity and mortality rates associated with this syndrome.<sup>10</sup> In our study, the multivariate analysis revealed that baseline haematocrit and uric acid values were both predictive factors for ARF.

The association between preoperative haematocrit values or low haematocrit during the intra-operative procedure in patients undergoing cardiac surgery and ARF has already been described.<sup>11</sup>

In recent years, a growing body of evidence has been compiled associating elevated uric acid levels in the blood with cardiovascular and renal pathologies.<sup>12</sup> Studies have demonstrated an association between elevated blood uric acid levels and the incidence of CKD, as well as a reduced

drop in renal function in patients with renal failure who are treated with alopurinol.<sup>13</sup> In addition, our group has demonstrated that uric acid is an independent marker for risk of mortality in the global population of elderly individuals.<sup>14</sup> Lapsia et al. demonstrated that preoperative uric acid levels are associated with increased incidence and risk of acute renal failure in patients following heart surgery.<sup>15</sup> In our study, despite the limited number of elderly patients who developed ARF, the uric acid levels in baseline measurements taken from our patients upon recruitment into the study also turned out to be an independent risk factor for developing ARF. One possible explanation for the value of uric acid as a marker for ARF could be the fact that uric acid values increase during hypoxia (such as in chronic pulmonary obstructive disease, heart failure, etc.). As such, patients with greater levels of uric acid in the blood would tend to be also subjected to a greater degree of ischaemia, making them more susceptible for developing ARF.

In addition, studies have also shown that episodes of ARF accelerate the progression towards CKD.<sup>5</sup> In our cohort of elderly patients with clinical stability upon recruitment into the study, we also demonstrated that these patients (who develop ARF) suffer a greater deterioration in renal function than those that do not, despite the fact that the episodes of ARF were functional in nature and related to other pathologies, in addition to the fact that no patients required dialysis treatment, making these the patients who would most benefit from monitoring in nephrological consultations.

To conclude, baseline uric acid and haematocrit values are independent risk factors for the development of ARF in elderly individuals. Despite the fact that these episodes of ARF are functional in nature and do not require dialysis treatment, they produce a deterioration in renal function over time.

### Conflicts of interest

The authors declare that they have no potential conflicts of interest related to the contents of this article.

### REFERENCES

1. Abdel-Kader K, Palevsky P. Acute kidney injury in the elderly. *Clin Geriatr Med* 2009;25(3):331-58.
2. Cheung CM, Ponnusamy A, Anderton JG. Management of acute renal failure in the elderly patient: a clinician's guide. *Drugs Aging* 2008;25(6):455-76.
3. Barretti P, Soares VA. Acute renal failure: clinical outcome and causes of death. *Ren Fail* 1997;19(2):253-7.
4. Schmitt R, Coca S, Kanbay M, Tinetti ME, Cantley LG, Parikh CR. Recovery of kidney function after acute kidney injury in the elderly: a systematic review and meta-analysis. *Am J Kidney Dis* 2008;52(2):262-71.

5. Ishani A, Xue JL, Himmelfarb J, Eggers PW, Kimmel PL, Molitoris BA, et al. Acute kidney injury increases risk of ESRD among elderly. *J Am Soc Nephrol* 2009;20:223-8.
6. Heras M, Fernández-Reyes MJ, Guerrero MT, Sánchez R, Muñoz A, Macías MC, et al. Ancianos con enfermedad renal crónica: ¿qué ocurre a los 24 meses de seguimiento? *Nefrología* 2009;29(4):343-9.
7. Heras M, Fernández-Reyes MJ, Guerrero MT, Sánchez R, Molina A, Rodríguez A, et al. Seguimiento durante 36 meses de la función renal en el anciano. *Dial Transplant* 2011;32(3):97-101.
8. Levey AS, Greene T, Kusek JW, Beck GJ. Simplified equation to predict glomerular filtration rate from serum creatinine. *J Am Soc Nephrol* 2000;11:828.
9. Charlson ME, Pompei P, Ales K, MacKenzie CR. A new method of classifying prognostic comorbidity in longitudinal studies: development and validation. *J Chronic Dis* 1987;40:373-83.
10. Mahajan S, Tiwari S, Bhowmik D, Agarwal SK, Tiwari SC, Dash SC. Factors affecting the outcome of acute renal failure the elderly population in India: a Hospital based study. *Int Urol Nephrol* 2006;38(2):391-6.
11. Swaminathan M, Phillips-Bute BG, Conlon PJ, Smith PK, Newman MF, Stafford-Smith M. The association of lowest hematocrit during cardiopulmonary bypass with acute renal injury after coronary artery bypass surgery. *Ann Thorac Surg* 2003;76:784-92.
12. Minguela JI, Hernando A, Gallardo I, Martínez I, García P, Muñoz RI, et al. La hiperuricemia como factor de riesgo cardiovascular y renal. *Dial Transp* 2011;32(2):57-61.
13. Goicoechea M, García de Vinuesa S, Verdalles V, Ruiz-Caro C, Ampuero J, Rincón A, et al. Effect of allopurinol in chronic kidney disease progression and cardiovascular risk. *Clin J Am Soc Nephrol* 2010;5:1388-93.
14. Heras M, Fernández-Reyes MJ, Sánchez R, Molina A, Rodríguez A, Álvarez-Ude F. Utilidad del ácido úrico como marcador de mortalidad global en una cohorte de ancianos. *Nefrología* 2012;32(1):67-72.
15. Lapsia V, Johnson RJ, Dass B, Shimada M, Kambhampati G, Ejaz NI, et al. Elevated uric acid increases the risk for acute kidney injury. *Am J Med* 2012;125(3):302.e9-17.